

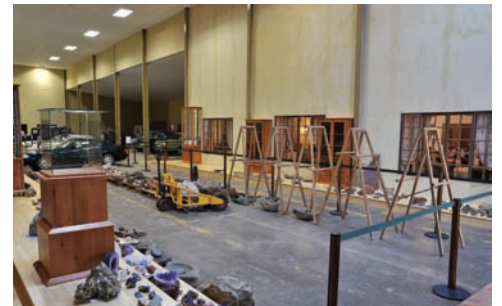
Cradle of Life

MPUMALANGA'S BEST KEPT SECRET



A mere 3 hours from Fourways and Sandton, en route to the Kruger Park, there's an enchanting wilderness that will simply take your breath away.





Converted from an old farmer's co-op and disused quarries into a wildlife sanctuary and rehabilitation centre nestling in pristine bushveld, the Cradle of Life is the perfect venue for a conference, an exclusive wedding, a specialised exhibition or simply a break away for the family. To start, there is a full Tourism Centre complete with conference facilities and breakaway rooms that will take up to 120 delegates, a restaurant that seats 120 guests, 15 chalets that sleep up to 4 people each, an exhibition centre, convenience store and a small petrol station. Clean and spacious cloakrooms and ample parking make this an entirely appropriate destination for large groups of tourists travelling by bus, or in convoy.

The true entertainment that is sure to thrill you, however, is to be found adjacent to the Tourism Centre. For the energetic, there's the opportunity to walk, jog or cycle amongst herds of giraffes, buck and other herbivores. But if you're not one for exertion, a game drive through the rolling hills is equally enthralling.



LIFESTYLE

Visit the Wildlife Sanctuary, where you can see some of the world's most awesome predators that are housed in large cages that blend beautifully with the surrounding landscape. Some of these fascinating animals have been rescued from traps or over-ambitious pet owners who were unable to maintain their upkeep. These include white lions, tigers, jaguars, pumas, leopards, cheetahs, Siberian wolves, hyenas and meerkats.

There is also a snake park, where you can safely view a variety of snakes from a close proximity and a raptor centre, where you will see birds of prey in all their fine plumage.

Heading back to the entertainment centre, spend some time in the amphitheatre, that holds up to 500 people to enjoy the idyllic strains of string quartets (in summer) and round the evening off at the boma, for a traditional outdoor meal.

For travel directions and reservations, contact Sean on: 079 892 8940 or e-mail: sean@cradleoflife.co.za



